



**This antenna bracket is for installation on the passenger side of these specific vehicles:**

<b>Ford Explorer</b>	<b>2020 +</b>
<b>(Install instructions on reverse side)</b>	
<b>Chevrolet Silverado 1500:</b>	<b>2014-2019</b>
<b>Silverado 2500, 3500:</b>	<b>2016-2019</b>
<b>GMC Sierra 1500:</b>	<b>2014-2019</b>

Tools Required:

13mm socket and driver, or 13mm box end wrench

Install location:

Right front fender  
(Passenger Side)

**Model#: CV2ANTNCG-R**



**Please Read: Always check for continuity between the bracket and chassis ground. If there is a problem with grounding, place the provided star washer between the bracket and the fender.**

**Step 1) Set the parking brake. Open hood and locate 13mm bolt near the back of the front fender. Remove bolt.**

**Step 2) Align the antenna bracket with the bolt hole. Reinstall the bolt and tighten.**

**Step 3) Insert the NMO or required connector to mate with the antenna and tighten securely keeping in mind that NMO mounts are designed to be installed from the top.**



NCG Company may not be held liable for any damage to the vehicle before, during or after the installation or removal of this antenna bracket.  
NCG may not be held liable for any personal injury resulting from accident or improper installation.



National Communications Group Co., Ltd  
Chino, CA 800-962-2611  
909-393-6133 Fax: 909-393-6136  
[www.natcommgroup.com](http://www.natcommgroup.com)



**Installation instructions for the 2020  
FORD EXPLORER**

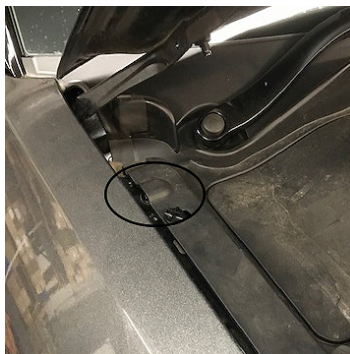
**Model#: CV2ANTNCG-R**

**Tools Required:**

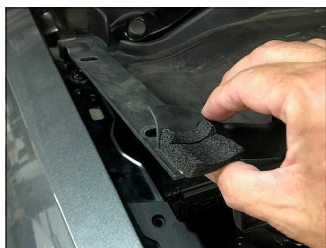
**10mm socket and  
driver, or 10mm  
box end wrench**

**Install location:**

**Left front fender  
(Passenger side)**



**The fender bolt is located un-  
der the panel at the right  
corner of the engine  
compartment.**



**Remove the clips that hold the panel in place to  
gain access to the fender bolt. Once the bracket  
is installed and bolted down, replace the clips  
that hold the panel in place.**

**Please Read: Always check for continuity between the bracket and chassis ground. If there is a problem with grounding, place the provided star washer between the bracket and the fender.**

**Step 1) Set the parking brake. Open hood and locate the 10mm bolt near the windshield of the front drivers side fender. Remove bolt.**

**Step 2) Align the antenna bracket with the bolt hole. Reinstall the bolt and tighten.**

**Step 3) Insert the NMO or required connector to mate with the antenna and tighten securely keeping in mind that NMO mounts are designed to be installed from the top.**



NCG Company may not be held liable for any damage to the vehicle before, during or after the installation or removal of this antenna bracket.  
NCG may not be held liable for any personal injury resulting from accident or improper installation.



National Communications Group Co., Ltd  
Chino, CA 800-962-2611  
909-393-6133 Fax: 909-393-6136  
[www.natcommgroup.com](http://www.natcommgroup.com)