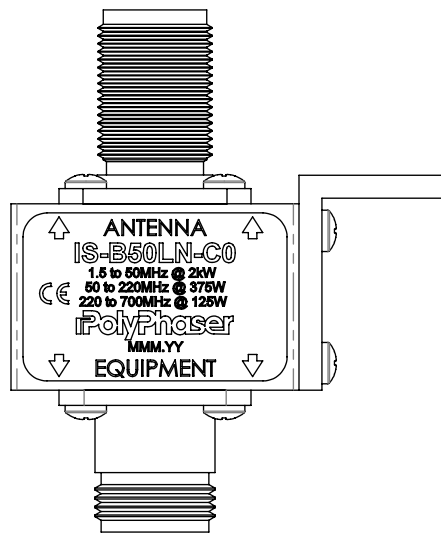
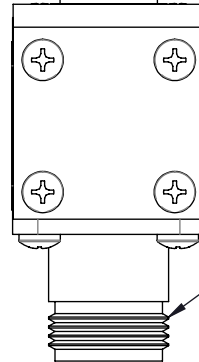


REVISIONS				
REV.	DESCRIPTION	ECN	DATE	APPROVED
J	REFER TO ECN	11902	8/9/13	JLJ

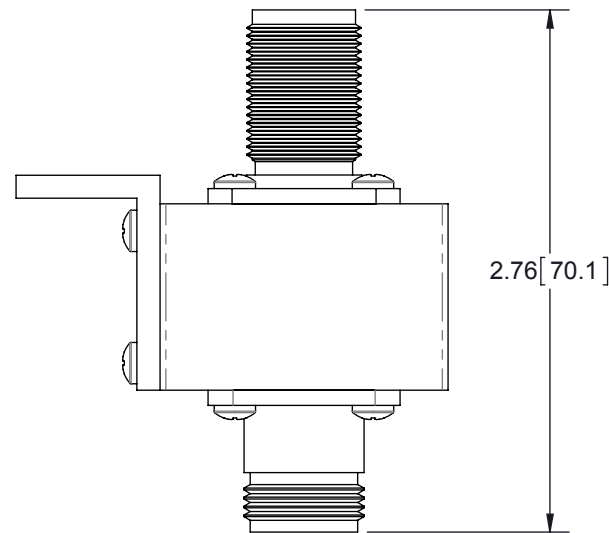


1.00 [25.3]

ELONGATED 'N' FEMALE CONNECTOR

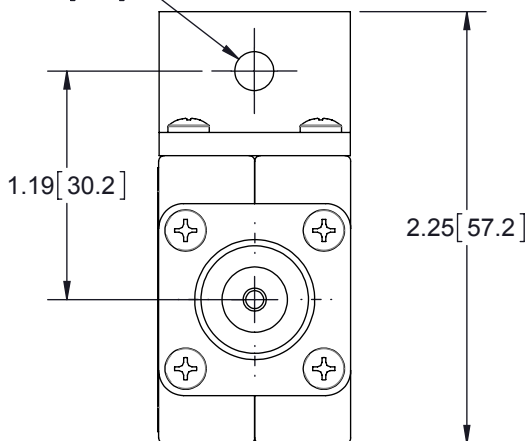


'N' FEMALE CONNECTOR



2.76 [70.1]

Ø.20 [5.2]



1.19 [30.2]

2.25 [57.2]

MAXIMUM CHARACTERISTICS

APPLICATION:

TWO WAY RADIO AND SCADA APPLICATIONS
NON-WEATHERIZED, BULKHEAD MOUNT

SURGE:

50kA IEC 61000-4-5 8/20µs WAVEFORM (TESTED)
20kA (RATED)

TURN-ON:

600Vdc ±20%

TURN-ON TIME:

≤2.5ns FOR 2kV/ns

FREQUENCY RANGE:

1.5MHz TO 700MHz

VSWR:

≤1.1:1 OVER FREQUENCY RANGE

INSERTION LOSS:

≤0.1dB OVER FREQUENCY RANGE

MAX POWER:

2kW @ 1.5MHz TO 50MHz
375W @ 50MHz TO 220MHz
125W @ 220MHz TO 700MHz

THROUGHPUT ENERGY:

≤10mJ FOR 3kA, 8/20µs WAVEFORM

TEMPERATURE:

STORAGE: -55°C TO +85°C
OPERATING: -50°C TO +50°C

VIBRATION:

1G UP TO 100Hz

CE COMPLIANT
RoHS COMPLIANT

CUSTOMER APPROVAL: _____ DATE: _____

ALL DIMENSIONS SHOWN ARE FOR REFERENCE ONLY.

UNLESS OTHERWISE SPECIFIED LEADING DIMENSIONS ARE INCHES DIMENSIONS IN [] ARE MILLIMETERS	DRAWN D. SCHARMANN	DATE 2/3/93	PolyPhaser [®]		SHEET 1 OF 1		
	ENG APPD J. JONES	DATE 2/3/93			SCALE 1:1		
TOLERANCES: FRACTIONS=± 1/32 .XX=± .03 ANGLES=± 1° .XXX=± .010	PRODUCT MGR		TITLE BROADBAND 1.5-700MHz R50 T.O. 600Vdc N FEM BLKH CUSTOMER SPECIFICATION		REV J		
NOTICE: THE INFORMATION AND DESIGN IN THIS DOCUMENT IS THE PROPERTY OF POLYPHASER CORPORATION. ALL RIGHTS RESERVED.	MARKETING APPD N. JOHN	DATE 2/3/93					
THIRD-ANGLE PROJECTION 	PROJECT NO.		DOCUMENT NAME IS-B50LN-C0-C	SIZE A	CAGE 61114	PROD CAT RFP	PART NUMBER IS-B50LN-C0

THESE COMMODITIES, TECHNOLOGY OR SOFTWARE WERE EXPORTED FROM THE UNITED STATES IN ACCORDANCE WITH THE EXPORT ADMINISTRATION REGULATIONS. DIVERSION CONTRARY TO U.S. LAW PROHIBITED.