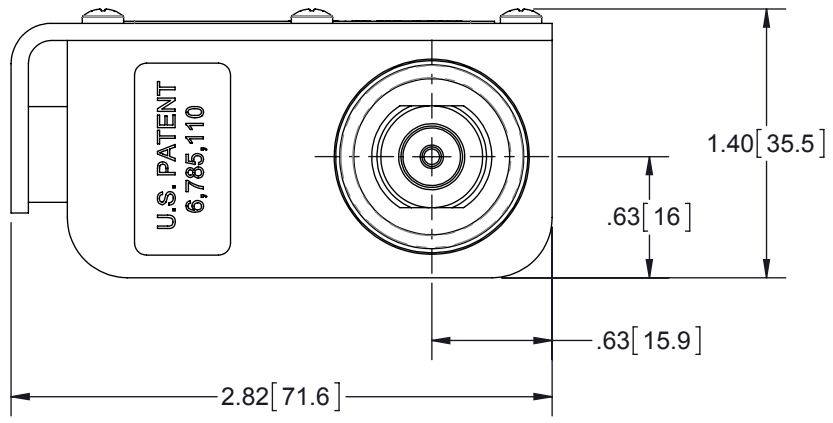
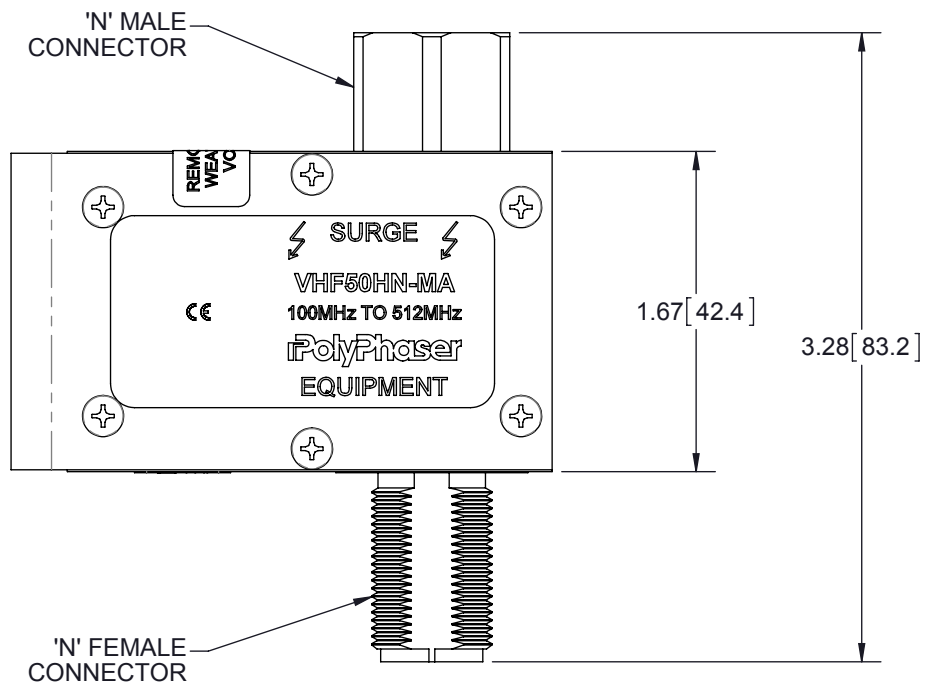
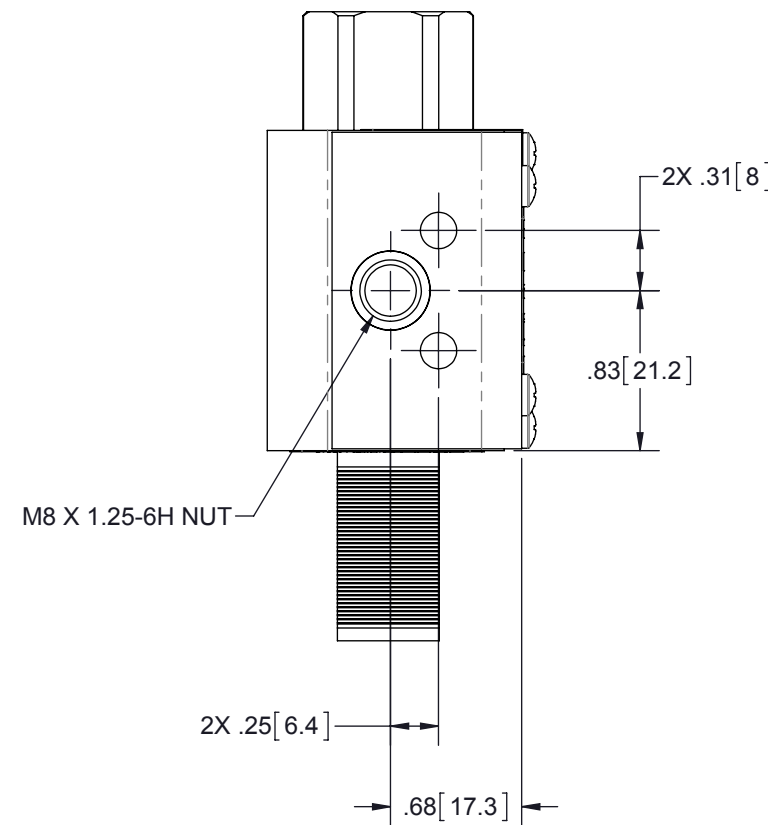
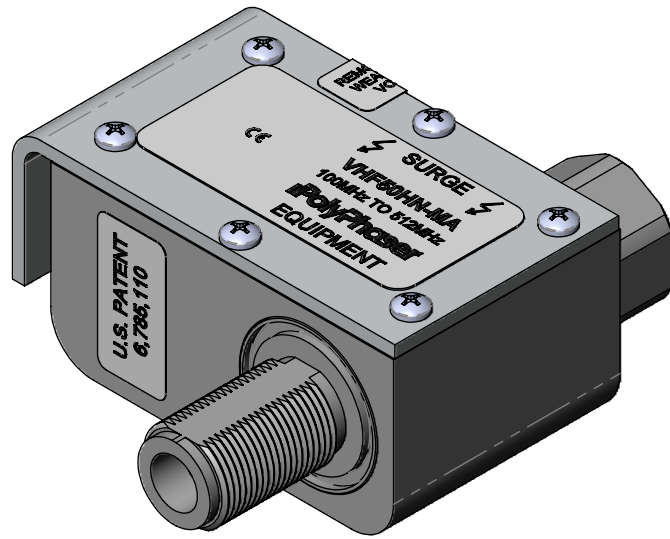


REVISIONS				
REV.	DESCRIPTION	ECN	DATE	APPROVED
F	REFER TO ECN	11920	8/06/13	KCB



MAXIMUM CHARACTERISTICS

APPLICATION:
 USED TO PROTECT CRITICAL COMMUNICATIONS SUCH AS PUBLIC SAFETY AND RAIL. WEATHERIZED, FLANGE OR BULKHEAD MOUNT

FREQUENCY RANGE:
 100MHz TO 512MHz

VSWR:
 ≤1.1:1 OVER FREQUENCY RANGE

INSERTION LOSS:
 ≤0.1dB OVER FREQUENCY RANGE

POWER:
 750W RMS AVERAGE

MAX. SURGE:
 20kA IEC 61000-4-5 8/20μs WAVEFORM

THROUGHPUT ENERGY:
 ≤500nJ FOR 3kA, 8/20μs WAVEFORM

RELATIVE HUMIDITY:
 TO 95%

ENVIRONMENTAL:
 MEETS IEC 60529 IP67
 MEETS BELLCORE #TA-NWT-000487 PROCEDURE 4.11, WIND DRIVEN (120MPH) RAIN INTRUSION TEST.

TEMPERATURE:
 -50°C TO +85°C STORAGE/OPERATING

CE COMPLIANT
 RoHS COMPLIANT


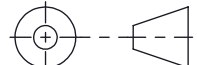
HARDWARE KIT INCLUDES:

QTY	DESCRIPTION
1	NUT 5/8-24 303 HEX SS
1	WASHER 5/8 410 SS
1	SILICONE O-RING 019
1	SCREW CAP M8X1.25X10MM
1	WASHER 5/16 EXT 18-8 SS

CUSTOMER APPROVAL: _____ DATE: _____

ALL DIMENSIONS SHOWN ARE FOR REFERENCE ONLY.

THESE COMMODITIES, TECHNOLOGY OR SOFTWARE WERE EXPORTED FROM THE UNITED STATES IN ACCORDANCE WITH THE EXPORT ADMINISTRATION REGULATIONS. DIVERSION CONTRARY TO U.S. LAW PROHIBITED.

UNLESS OTHERWISE SPECIFIED LEADING DIMENSIONS ARE INCHES DIMENSIONS IN [] ARE MILLIMETERS	DRAWN	SH	DATE			
	ENG APPD	RCD	6/27/03			
	PRODUCT MGR	NT	6/26/03			
	MARKETING APPD	SJD	6/27/03			
TOLERANCES: FRACTIONS=± 1/32 .XX=± .03 ANGLES=± 1° .XXX=± .010	MATERIAL	PROJECT NO.	100-512MHz VHF COMB 750W CUSTOMER SPECIFICATION			
THIRD-ANGLE PROJECTION	NOTICE: THE INFORMATION AND DESIGN IN THIS DOCUMENT IS THE PROPERTY OF TRANSECTOR SYSTEMS. ALL RIGHTS RESERVED.		SIZE	CAGE	PART NUMBER	REV
			B	61114	VHF50HN-MA	F
	SCALE	PROD CAT	DOCUMENT NAME	SHEET	OF	
	1:1	RFP	VHF50HN-MA-C	1	1	