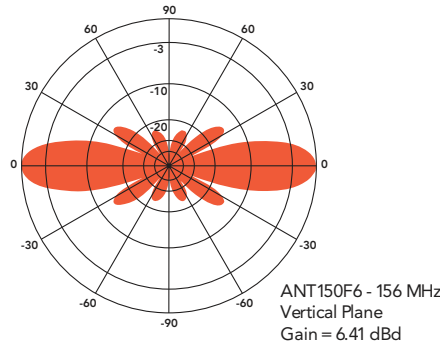


ANT150F6 SERIES

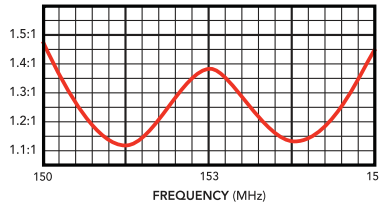
FIBERGLASS COLLINEAR ANTENNA 6 dBd

The Telewave ANT150F6 is an extremely rugged, medium-gain, fiberglass collinear antenna, designed for operation in all environmental conditions. The antenna is constructed with brass and copper elements, connected at DC ground potential for lightning impulse protection. All junctions are fully soldered to prevent RF intermodulation, and each antenna is completely protected within a high-tech, flexible radome to ensure survivability in the worst environments. IP24

The ANT150F6 includes an ANTC482 dual clamp set for mounting to a 1.5" to 3.5" O.D. support pipe, and a 24" removable RG-213 N-Male jumper. Stand-off and top mounts are also available.



TYPICAL VSWR RESPONSE



FREQUENCY RANGES	
ANT150F6-A	155 - 163 MHz
ANT150F6-B	145 - 151 MHz
ANT150F6-C	151.5 - 157.5 MHz
ANT150F6-D	166 - 173 MHz
ANT150F6-E	165 - 172 MHz
ANT150F6-F	143 - 148 MHz
ANT150F6-G	154 - 162MHz
ANT150F6-SF	153 - 161 MHz
ANT150F6-L	173.1 MHz

FREQUENCY RANGES	
ANT150F6-1	138 - 144 MHz
ANT150F6-2	144 - 151 MHz
ANT150F6-3	150 - 157 MHz
ANT150F6-4	156 - 164 MHz
ANT150F6-5	158 - 166 MHz
ANT150F6-6	161 - 168 MHz
ANT150F6-7	167 - 172.5 MHz
ANT150F6-8	171 - 175 MHz



SPECIFICATION		138-151MHz	150-175MHz
Frequency (continuous)	138-175 MHz (8 bands)	Dimensions (L x base diam.)	256" x 2.75" 244" x 2.75"
Gain	6 dBd	Tower weight (antenna + clamps)	43 lb. 43 lb.
Power Rating (Type.)	500 watts	Shipping weight	65 lb. 65 lb.
Impedance	50 ohms	Wind rating/ with 0.5" ice	150 / 125 MPH
VSWR	1.5:1 or less	Maximum exposed area	4.05 ft. ² 4.05 ft. ²
Pattern	Omnidirectional	Lateral thrust at 100 MPH	162 lb. 159 lb.
Vertical beamwidth	20°	Bending moment at top clamp	1090 ft. lb. 1010ft. lb.
Termination	Recessed N Female (7-16 DIN-F opt)	(100MPH, 40 PSF flat plate equiv.)	
Temperature	-40 to 140 Degrees F -40 to 60 Degrees C		